



Lindø – and the Danish Maritime Industry

27 oktober 2017

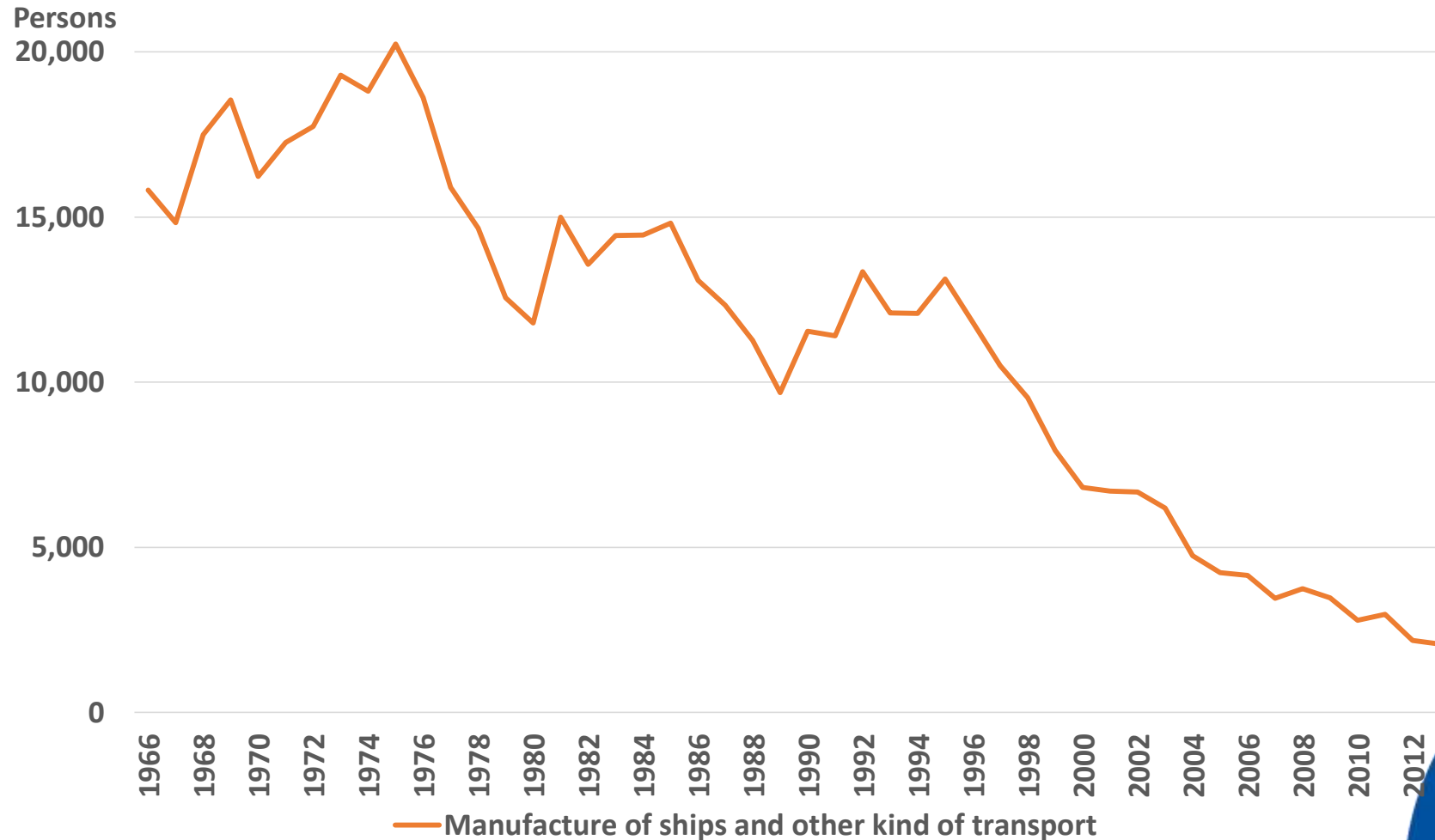
IndustriALL Global Shipbuilding/shipbreaking
Action Group Meeting
October 31st 2017 in Rotterdam

Agenda

- ❖ Employment in Danish shipyards over time
- ❖ Lindø as case (shipyard)
- ❖ Lindø as case (Industry Park)
- ❖ Danish Maritime industry today
- ❖ Danish Maritime Industry in the (nearer) future



Danish employment in manufacturing of ships and other kinds of transport



Data Source: Statistics Denmark – NABB117

Lindø as shipyard

- ❖ **Founded in 1917 by A.P. Møller
Maersk**
- ❖ **Created Maersk E-class
container ship in 2006-2008**
- ❖ **When launched in 2006 the
E-class was the largest
container ship ever built**



Lindø as shipyard



- ❖ In 1974 where 6100 was employed.
- ❖ In 1974 Lindø was employing almost 1/3 of the Danish shipyard sector. In 2009 this share was far above 50 pct.
- ❖ When closed in 2009 almost 3000 employees was fired



What happened to the workers?

- ❖ **Unemployed at first**
- ❖ **Some of them retired and became pensioners**
- ❖ **Cooperation between employees and employers**
- ❖ **Education and new jobs**
- ❖ **Finally creation of Lindø Industri Park**



Lindø as an industry park

❖ Today Lindø has become a
industry park

- ❖ Consisting of 100 firms (Primary maritime industry)
- ❖ Employed daily 2.600 persons*

❖ Planned expansion of the port

– 500.000 m²



The Danish maritime industry today

- ❖ Today the industry is based on subcomponents to the manufacture of ships
- ❖ The sector employs approximately 25.000 persons
- ❖ 1000 maritime companies are based in Denmark today
 - ❖ Up to 87% of the companies within the Danish maritime industry have parent companies or subsidiaries in other countries



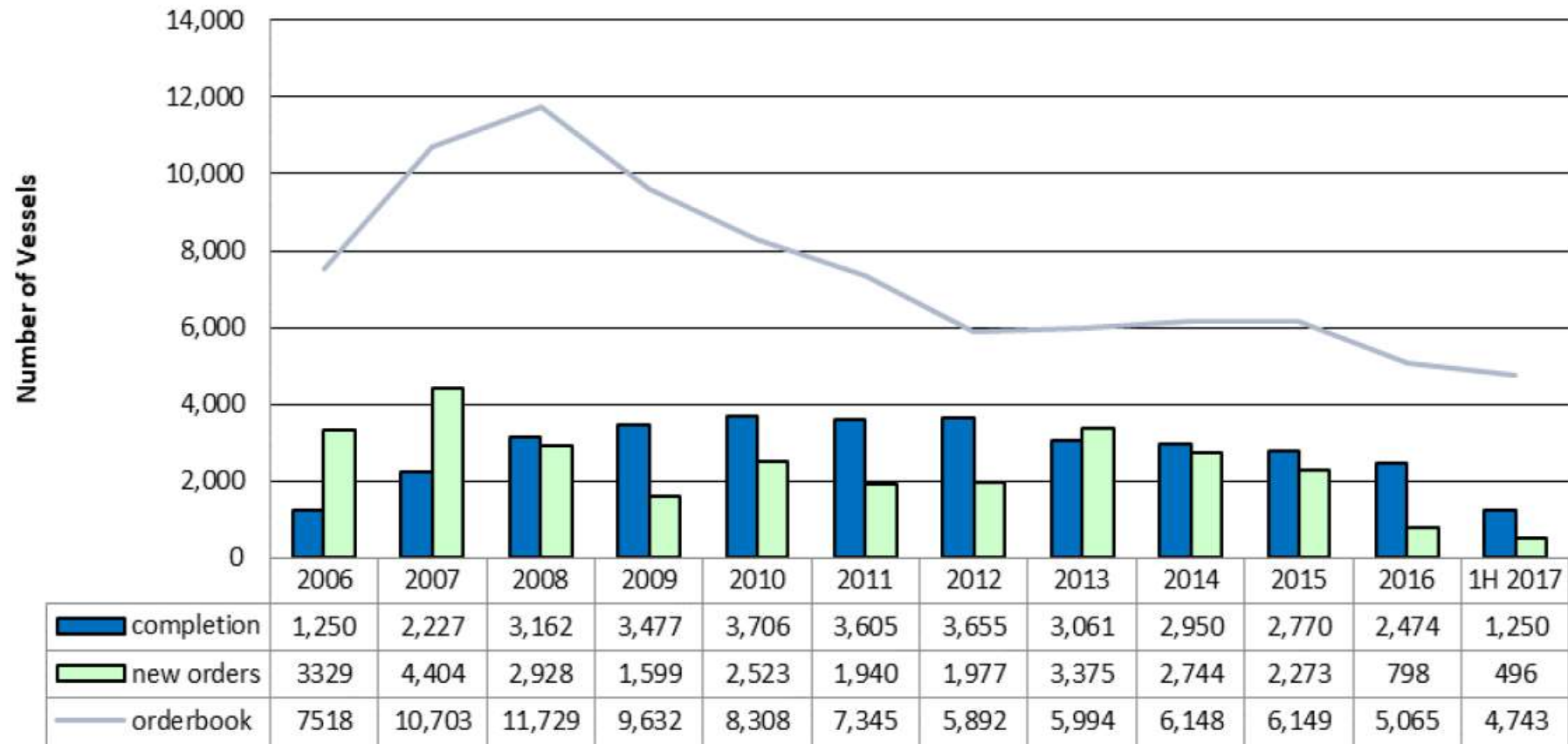
The Danish maritime industry

- ❖ The production value from the sector is EUR 12,2 billion
 - ❖ 70 % comes from export
- ❖ Denmark represent 10,8 % of the EU28 production value for maritime technology and about 2,5% of the global production value.



What will the future bring?

Global Commercial Shipbuilding Activity in Number of Vessels



Data Source: IHS Fairplay



Questions and comments

COMPLAINTS
COMMENTS
COMPLIMENTS

